

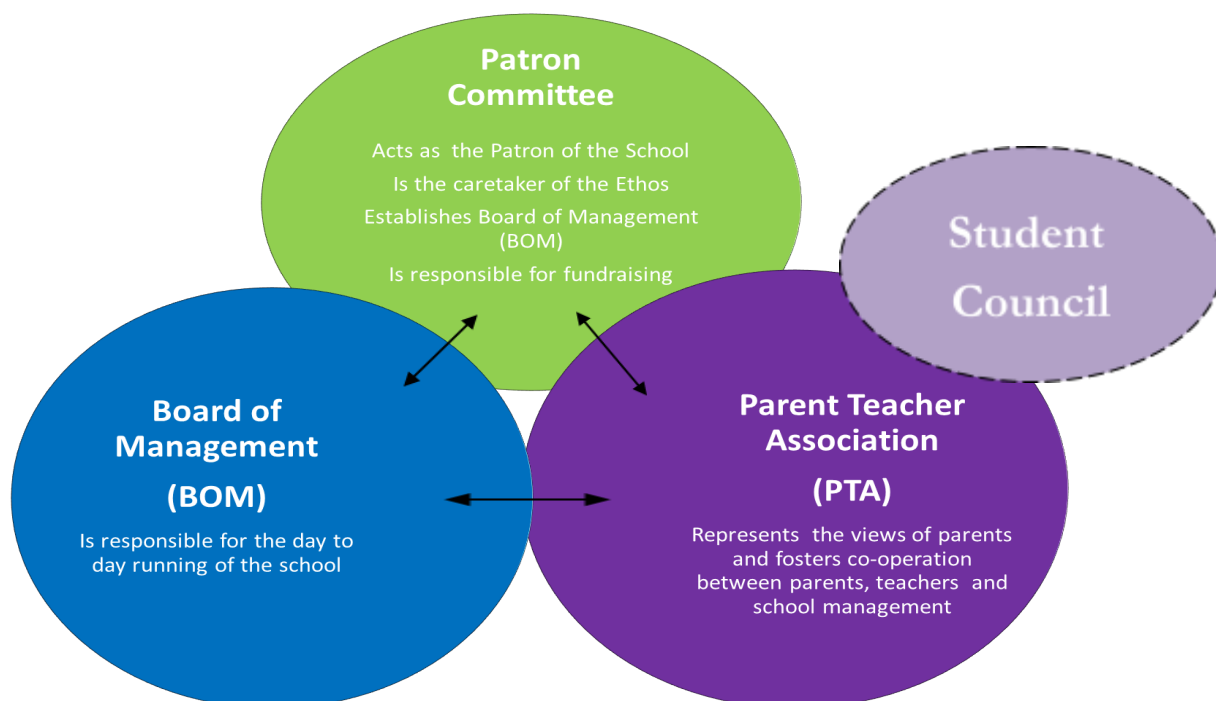


## What Is the North Bay Educate Together Patron?

North Bay Educate Together National School has an ethos that is defined by our Patron. It is based on four principles:

- Co-educational
- Multi-denominational
- Child-centred
- Democratically run

Being democratically run means that parents play an even greater role in the school than in most primary schools in Ireland. The diagram below shows how the committees of our school link together to run different aspects of the school. Parents are involved in the Patron Committee, Board of Management, and Parent Teacher Association.



For many people, the idea of a Patron Committee is unfamiliar. In North Bay, the Patron fulfils the following functions:

- Acts as the guardian of the school's ethos
- Fundraises to contribute to the school running costs
- Appoints the new Board of Management (BOM) every 4 years
- Appoints two Patron reps to the BOM
- Appoints the Chairperson of the BOM
- Appoints some of the interviewers to teacher or principal interviews
- Approves teacher appointments



## How is North Bay Educate Together National School different to other primary schools in Ireland?

In many ways, it isn't. North Bay ETNS is a state funded national school and follows the same model as all others.

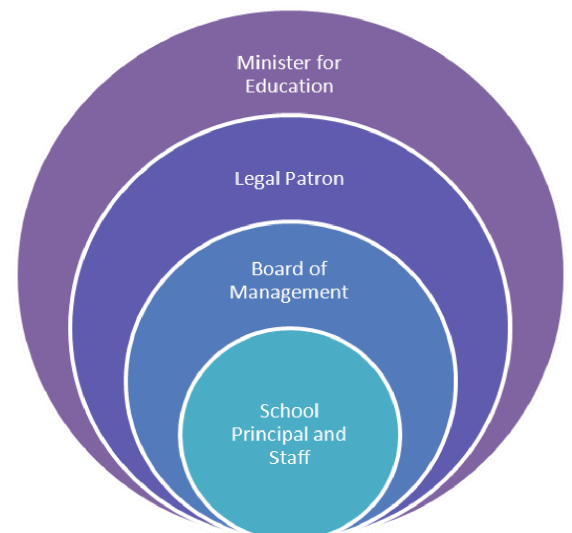
**The difference for North Bay ETNS is at Patron level.**

In denominational schools, the Patron is usually a leader of the religion concerned. For example, the Archbishop is the Patron of Catholic Schools.

In most of the Educate Together schools, the Patron is the umbrella organisation Educate Together ([www.educatetogether.ie](http://www.educatetogether.ie))

Our Legal Patron is the North Bay National School Project. It is a limited company with charitable status set up by a group of parents who came together in 1988. It became legal Patron of North Bay when the school opened in the 1990-1991 school year.

North Bay ETNS is one of several Educate Together schools with an independent Patron.



**The Patron is not an individual;** it is a body of people who subscribe to the aims and objectives of the school.

All parents/guardians of children in the school are invited and encouraged to join the Project shortly after the start of each school year. The annual fee is kept low so that everyone can join.

Each year the members elect the Patron Committee. This committee of 11 people performs the duties of the Patron. The Executive Officers are directors of the limited company, The North Bay National School Project, and committee members are trustees of the charity of the same name.



## **What does the Patron do?**

The Patron is responsible for maintaining the ethos of the school and for fundraising.

### **Ethos**

The ethos of a school describes its spirit or character. The main function of the Patron is to determine the overall ethos and guiding policies for the school. This includes fundamental issues such as enrolment, religious education, and sibling policy. Under the Education Act, one half hour period of teaching per day for children in the school is reserved for the Patron's exclusive religious curriculum. In North Bay ETNS and other Educate Together schools, this is the Learn Together Programme.

### **Fundraising**

The Patron is responsible for fundraising for the short and medium term. It raises money for the school in lots of different ways. There are social events such as the Summer and Winter Fairs, and activities in the school such as bake sales, raffles and more. People who want to support the school can attend or help with fundraising events, set up a standing order, and/or contribute on Envelope Day each year.



## What are the benefits of membership?

By joining the North Bay National School Project, you will be playing an active role in the democratic governance of the school.

The more people who join, the more democratic this process becomes.



As a member you will:

- Have voting rights on motions at the AGM (in the past, this has included major issues such as changes to the enrolment policy or sibling policy of the school)
- Have a say in how funds for the school are raised and managed
- Be able to take part in electing the Patron Committee
- Be entitled to serve as a member of the Patron Committee
- Become a member of Educate Together

## How do I join?

Visit the North Bay ETNS web site ([www.northbay.ie](http://www.northbay.ie)), follow the link at the top of the page to 'More', then 'Patron Committee', then 'Membership' and download a form.

Complete the form and send us an email to: [patron@northbayetns.com](mailto:patron@northbayetns.com)